

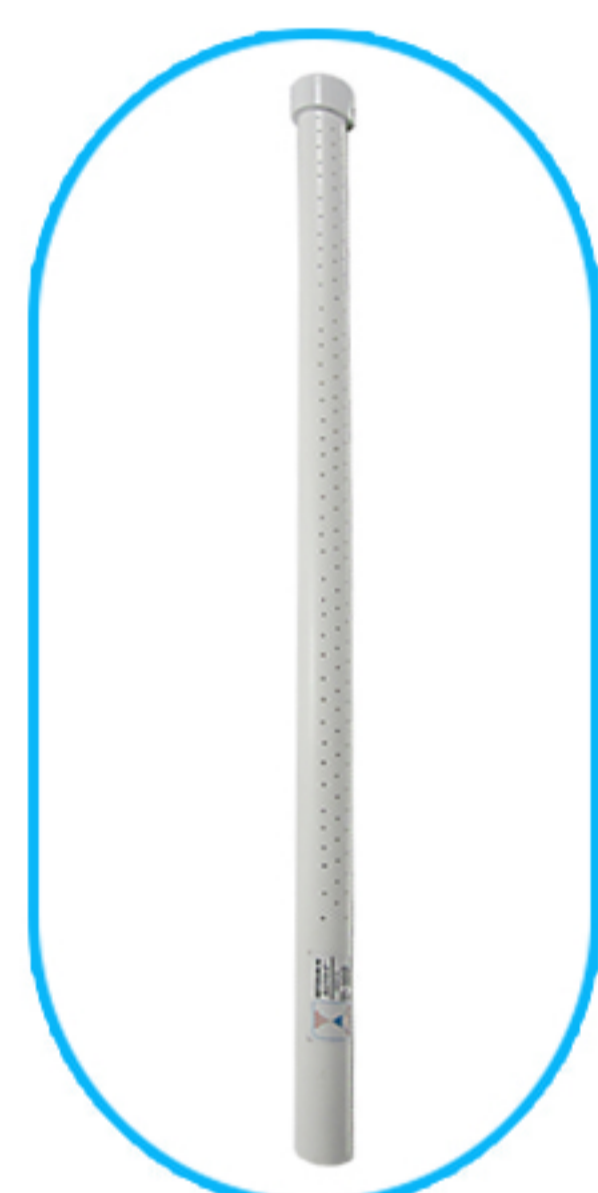
# INSTRUCTION MANUAL POOL COOLER

IN-GROUND POOL COOLER



**Congratulations! You have purchased the most effective system to cool your hot pool this summer. By following these procedures, you will soon be able to reduce your pool water temperature to comfortable levels.**

1. Locate appropriate return outlet (Jet) in your pool. Then, remove all three fittings from your pools return (Jet) outlet as shown below.



Sprayer Pipe

**1. Retaining Cap**  
attached to the pool wall.



**2. Eye Ball**

**3. Threaded Pool Wall Fiting**



## MULTIPLE WAY TO REMOVE POOL FITTINGS

Use of pool cooler key (Sold separately) makes removal of fittings much easier without any damage. All three fittings must be removed before proceeding further.

2. Screw in the threaded adapter (Provided with your **Pool Cooler**) into the return (Jet) outlet.

3. Position the header pipe at the opening of the adapter with the top of header pipe pointing towards 10 o'clock.

4. While Pressing the header pipe into the adapter, straighten the pipe to the upright position.

5. Next, insert the sprayer pipe into the top of the header pipe with its orifices positioned for the best return of the water into the pool.

6. An extra plug is added to this kit in case more pressure is needed (in-ground only)  
**Note:** Do not glue header pipe into adapter. Do not allow children to swing on The Pool Cooler.

**Removal:** While pulling at the bottom bend of the header pipe, move the pipe back towards the 10 o'clock position. Heavy pressure is not required! The adapter will remain in the pool return (Jet) outlet for when future cooling is needed.

**For best results:** Cycle pools filtration system during the night hours while the air is at its coolest. install pool cooler at each Jet of your pool for maximized cooling.

**Have a really COOL POOL this summer!**

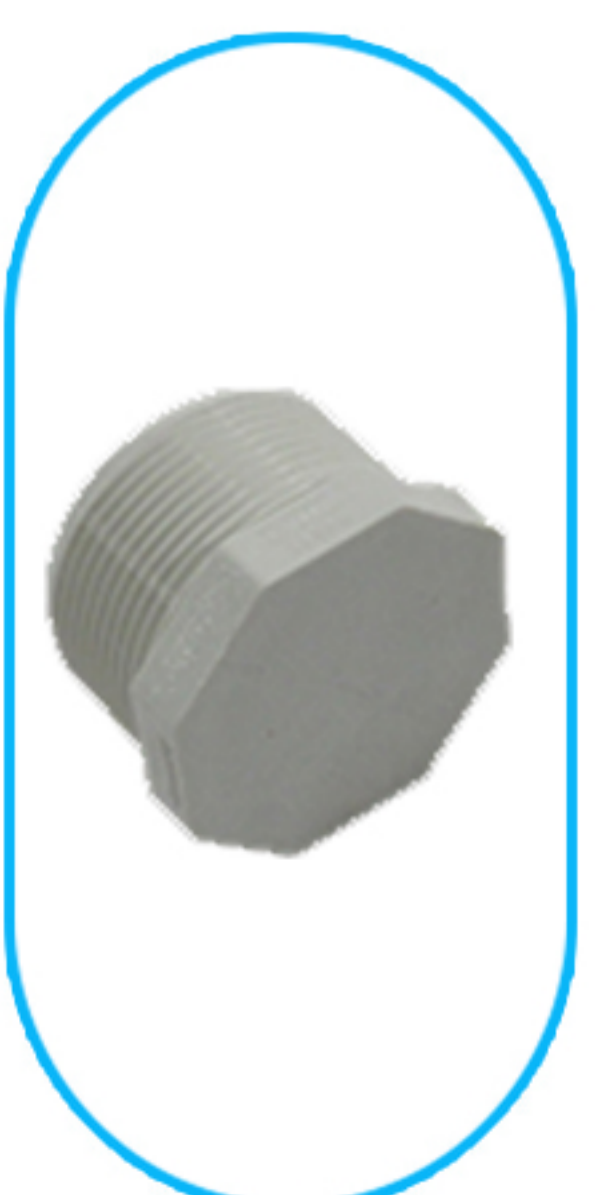
<https://www.youtube.com/watch?v=JXOli7kOcLQ>



Header Pipe



Male Threaded Adapter



Plug

